

Category:Internal shop

Purpose

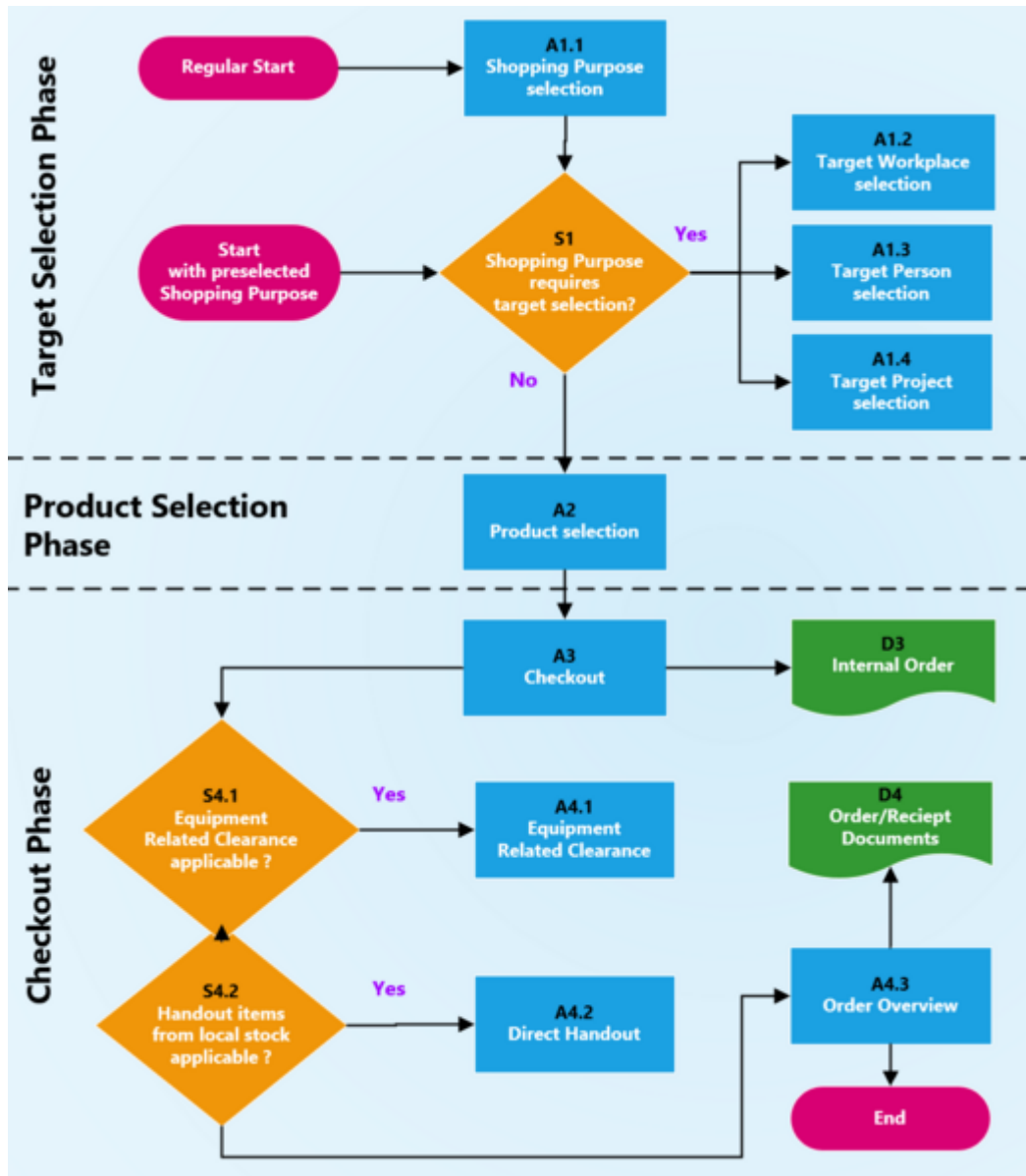
Internal shop plays a central role in Zugseil products by enabling the users within one digital (in real life: employees of a company) to order their work equipment, be it uniforms, personal protection equipment, stationary, or something else. Through the internal shop, users place [internal orders](#) or [customer orders](#), which are then fulfilled from the local stock, forwarded to suppliers as procurement orders automatically, or accumulated until one larger procurement order can be placed to one or more suppliers.

In simple terms, the purpose of the internal shop is to simplify equipment ordering to the end user (employee) in the same way any web shop aims to simplify the shopping experience to their end users. Unlike a regular web shop, the one has a taller order to serve: in addition to having to offer a state of the art search and filtering functionality, it has to take into account that certain users are allowed to see only a subset of products, that, depending on their main activity within the company, they may only be able to order certain products every other year, that they might have a budget which can be expressed in points, currencies or simply numbers, and so on.

Layout and functionality

Depending on [shopping purpose](#) and the corresponding shopping assistant, the Internal shop will look and behave differently. The details will be laid out in branching articles. However, always have in mind that the main flow is the same:

1. User selects the shopping purpose (whether explicitly or by clicking on a link which sets the shopping purpose for Internal shop)
2. If shopping purpose requires target selection (order recipient) at the beginning of the process, user is let through [Target selection](#) process
3. User is lead through Product selection, through shopping assistant corresponding to the shopping purpose. At the time of writing this article, there are two shopping assistants
 1. [Regular shopping assistant](#)
 2. [Personal equipment shopping assistant](#)
4. User finalizes their order in [Checkout](#)



Shopping purpose is, in other words, a context in which the internal shop operates. Internal shop cannot be used without a shopping purpose.

In general, the shopping purpose will be supplied by the widget which opens the shop.

If however, internal shop is started from a point that does not supply the shopping purpose, a screen for selecting a shopping purpose must be displayed first.

We will concentrate on the approach with widgets.

Internal shop

Einkaufszweck auswählen

Name	Beschreibung	Shopping assistant
Order on BKC	Logged in user can order equipment for themselves based on their activity entitlement.	Personal equipment shopping assistant
Order on BKC for team member	Logged in user can order equipment for a team member based on team member's activity entitlement.	Personal equipment shopping assistant
Order on cost center	Logged in user can order stationary for a team member based on their product rights.	Regular shopping assistant

Weiter